

## QUICK INSTALLATION GUIDE



### Dual Band Wireless AC1200 ADSL2+ Modem Router

DSL-2880AL

## Package Contents



Dual Band Wireless AC1200 Gigabit ADSL2+ Modem Router (DSL-2880AL)



Power Adapter



Ethernet Cable



ADSL2+ Microfilter/Splitter



Quick Install Guide

If any of the above items are missing, please contact your reseller/retailer.

## Hardware Overview



|    |                 |  |
|----|-----------------|--|
| 1  | Power LED       | A solid green light indicates a proper connection to the power supply.   |
| 2  | LAN (1~4) LEDs  | A solid green light indicates a connection to a Gigabit Ethernet device while an amber light indicates a connection to a 10/100 device. The LED will blink during data transmission.   |
| 3  | Wireless LED    | A solid green light indicates that the 2.4G wireless segment is ready while an amber light indicates that the 5G wireless segment is ready. The light will blink during data transmission.   |
| 4  | WPS LED         | The light will blink during the WPS process.   |
| 5  | USB LED         | A solid green light indicates a connection to a USB device.  |
| 6  | WAN LED         | A solid green light indicates a WAN connection to a Gigabit Ethernet device, an amber light indicates a connection to a 10/100 device and both green and amber indicates a connection to a 10Mbps device. The LED will blink during data transmission. |
| 7  | ADSL LED        | A solid green light indicates a proper connection to the ADSL enabled telephone line.  |
| 8  | Internet LED    | A solid green light indicates a proper connection to your broadband service. The light will blink during data transmission.  |
| 9  | ADSL Port       | Connect to an ADSL enabled telephone line and the supplied microfilter/splitter.   |
| 10 | WAN Port        | Connect to an Ethernet WAN service (e.g. NBN/UFB). The LED will blink during data transmission.  |
| 11 | LAN (1~4) Ports | Connect Ethernet devices such as computers, switches, and game consoles.   |
| 12 | USB Port        | Connect USB devices such as printers, scanners or storage.   |
| 13 | WiFi Buttons    | Press for three seconds to enable/disable 2.4G or 5G wireless networks.  |
| 14 | Reset Button    | Press and hold the reset button with a paper clip for ten seconds to reset the router to the factory default settings.   |
| 15 | Power Button    | Press to turn on or off the device.  |
| 16 | Power Port      | Connect the supplied power adapter.  |

## Minimum Requirements

### Internet Requirements:

- An activated ADSL telephone line and account with an Internet provider

### Web-based Configuration Requirements:

Device with the following:

- An installed Ethernet adapter or wireless adapter

Supported Browsers:

- Internet Explorer 7 or higher
- Safari 4 or higher
- Chrome
- Firefox

### Link'n Print Utility Requirements (optional):

- Windows XP/Vista/7/8
- Mac OS X (10.5, 10.6, 10.7, 10.8)

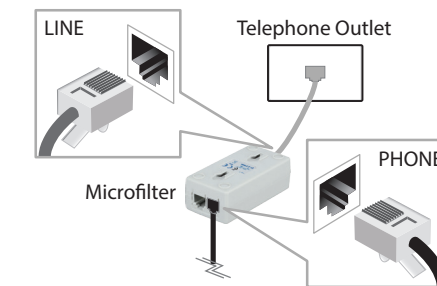
## Before you Start

- **Internet Provider Account Details** - If you are using an Australian or New Zealand ADSL connection, you will need your user name and password. If you do not have this information, contact your Internet provider.

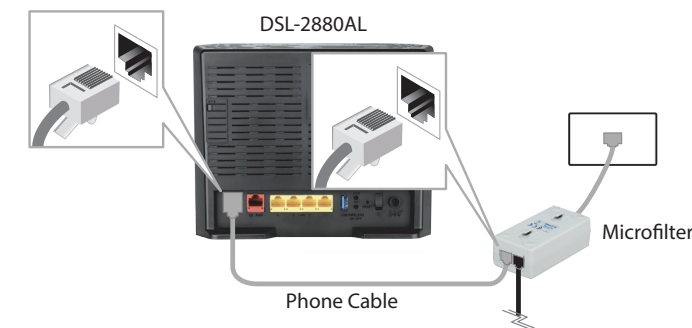
Do not proceed until you have this information.

## Connect your Modem Router

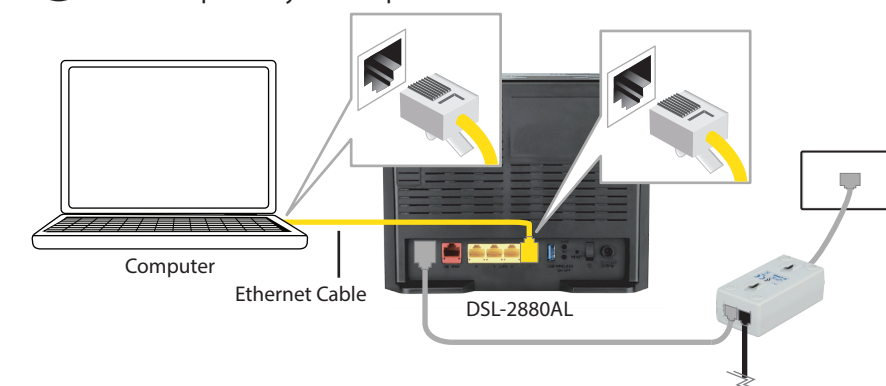
- 1 Connect your existing Phone cable from the telephone outlet to the LINE port on the Microfilter and your telephone handset into the PHONE port.



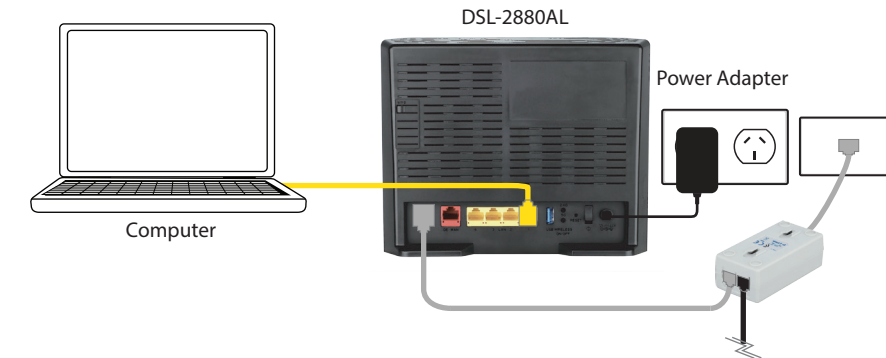
- 2 Connect the Phone cable from the DSL port on the Microfilter to the ADSL port of the modem router.



- 3 Connect the Ethernet cable from the LAN port of the modem router to the Ethernet port on your computer.



- 4 Plug the power adapter into your modem router and connect to an available power outlet.



- 5 After the modem router has powered up, verify that the Power and ADSL LEDs are both lit.

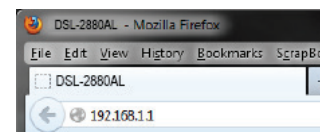


- 6 Continue with the *Configuration* section on the other side of this document.

## Configuration

### Web Browser Setup

- 1 Open a web browser (e.g., Internet Explorer, Chrome, Firefox, or Safari) and enter the IP address of the router (<http://192.168.1.1>). The default username and password will be **admin** and **admin** respectively.



**Note:** If you want to configure your modem router from a wireless computer or mobile device, connect to the router wirelessly by going to your wireless utility on your device. The default Wi-Fi Networks are D-Link DSL-2880AL and D-Link DSL-2880AL 5Ghz. Select one and then continue to step 2.



- 2 When the Welcome screen appears, click **Next** to start the wizard.



- 3 Enter a new **Password** and **Verify Password** to secure your modem router, click **Next** to continue.

**STEP 1: SET YOUR PASSWORD**

To secure your new networking device, please set and verify a password below:

Password :

Verify Password :

- 4 Select your **Time Zone** from the list, click **Next** to continue.

**STEP 2: SELECT YOUR TIME ZONE**

Select the appropriate time zone for your location. This information is required to configure the time-based options for the router.

Time Zone: (GMT +10:00) Brisbane, Canberra, Melbourne, Sydney, Hobart, Yalutsk

- 5 Select your **Country** and **Internet Provider** from the list, click **Next** to continue.

**SET PPPoE**

Enter the PPPoE information provided to you by your ISP. Click Next to continue.

User Name :

Password :

Confirm Password :

Enable PPPoE Passthrough :

Now enter your **User Name** and **Password** as provided by your Internet Provider, click **Next** to continue.

- 6 Enter a new **Wireless Network Name (SSID)** for both the 2.4G and 5G networks available in this modem router, click **Next** to continue.

**STEP 4: NAME YOUR WIRELESS NETWORK**

Your wireless network needs a name so it can be easily recognised by wireless clients. For security purpose, it is highly recommended to change the pre-configured network name of [default].

2.4G Wireless Network Name (SSID) :

5G Wireless Network Name (SSID) :

- 7 Select the security method that you wish to use for your wireless networks, click **Next** to continue. D-Link recommends that you select **BEST**.

**STEP 5: SECURE YOUR WIRELESS NETWORK**

In order to protect your network from hackers and unauthorized users, it is highly recommended you choose one of the following wireless network security settings.

There are three levels of wireless security - Good Security, Better Security, or Best Security. The level you choose depends on the security features your wireless adapters support.

For information on which security features your wireless adapters support, please refer to the adapters' documentation. Note: All wireless adapters currently support WPA

**BEST** :  Select this option if your wireless adapters SUPPORT WPA2

**BETTER** :  Select this option if your wireless adapters SUPPORT WPA

**GOOD** :  Select this option if your wireless adapters DO NOT SUPPORT WPA

**NONE** :  Select this option if you do not want to activate any security features

Enter a **Wireless Security Password** (also known as a passphrase or Wi-Fi Password) for each wireless network, click **Next** to continue.

**STEP 6: SET YOUR WIRELESS SECURITY PASSWORD**

Once you have selected your security level - you will need to set a wireless security password. With this password, a unique security key will be generated.

2.4G Wireless Security Password :

5G Wireless Security Password :

- 8 Click **Next** to finish setting up your router.

**FINISH**

Your DSL-2880AL is ready for use now. Congratulations! Your DSL-2880AL has been setup successfully and is now ready for use.

**Congratulations! You have completed the modem router installation.**

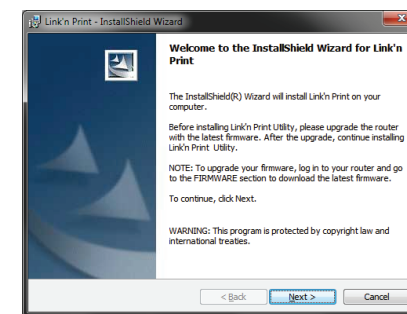
### Link'n Print Utility

The Link'n Print allows you to share USB devices such as external storage drives and multifunction printers with other users across your network by simply connecting the device to your modem router. This allows you to use an external storage drive or printer located across your network as if it were connected to your local PC.

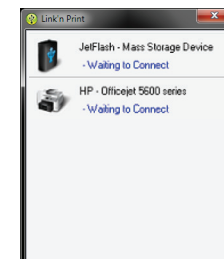
- 1 Download the application for your operating system from the below link or by visiting the D-Link Support website as shown on the last page of this guide and selecting the DSL-2880AL from the list:

<http://www.dlink.com.au/tech/download/download.aspx?product=DSL-2880AL>

- 2 Extract and Run the Setup/Installer that you have just downloaded.



- 3 When completed the Link'n Print utility will be installed and run on your computer. Now you can Insert a USB device to your modem router.



- 4 Simply right click on the USB device you wish to use and click **Connect**, this will now establish a direct connection to the USB device for your computer.

## Troubleshooting

### How do I connect my wireless devices to the DSL-2880AL modem router?

1. Open your wireless network utility that displays available wireless networks.
  2. Select the Wi-Fi Network name you assigned in the wizard and connect.
- Note:** If you did not run the setup wizard or you reset the router to its default settings, refer to the label on the router for the default Wi-Fi Network Name and Wi-Fi Password.

You can also connect using WPS:

1. Press the WPS button on the DSL-2880AL for three seconds.
2. Within one minute press the WPS button on your wireless device.
3. Allow up to two minutes to connect.

**Note:** Some devices may require you to log in to a utility to start the WPS process. Refer to the user manual of the device you want to connect to the router if you do not know how to start the WPS process.

### How do I change the wireless settings on the DSL-2880AL modem router?

1. Open a web browser (e.g. Internet Explorer, Chrome, Firefox, or Safari) and enter the IP address of the router (<http://192.168.1.1>).
2. At the login screen, type in **admin** for the user name and enter the router password you created in the wizard (**admin** by default).
3. Go to **Setup > Wireless Settings > Manual Wireless Network Setup** to create a new Wi-Fi network name (SSID) and Wi-Fi password.

Documentation available at <http://www.dlink.com.au/DSL-2880AL>

## Technical Support

Having trouble installing your new product? D-Link's website contains the latest user documentation and software updates for D-Link products. Australian and New Zealand customers can contact D-Link Technical Support through our website.

### Australia

Internet: <http://support.dlink.com.au>

### New Zealand

Internet: <http://support.dlink.co.nz>

Copyright ©2013 D-Link Corporation/D-Link Australia Pty Ltd. All rights reserved. D-Link and the D-Link logo are registered trademarks of D-Link Corporation or its subsidiaries in Australia and other countries. iPhone, iPad, and iPod touch are registered trademarks of Apple Inc. Android is a trademark of Google, Inc. Other trademarks are the property of their respective owners. Maximum wireless signal rate derived from IEEE Standard 802.11g and 802.11n specifications. Actual data throughput will vary. Network conditions and environmental factors, including volume of network traffic, building materials and construction, and network overhead, lower actual data throughput rate. Environmental factors will adversely affect wireless signal range. Product specifications, size and shape are subject to change without notice, and actual product appearance may differ from that depicted on the packaging. Visit [www.dlink.com.au](http://www.dlink.com.au) for more details.

Version 1.0 | August 15, 2013

**D-Link**